



Abstract and Paper Submission

Authors are invited to submit either a structured abstract in English (300 words maximum) or a conference paper in English (4 pages maximum). Both, abstracts and conference papers must be submitted by **March 13th, 2015** using exclusively the templates available on the website www.bmt2015.de > Call for Papers. The abstracts and the conference papers will be peer-reviewed and if accepted will be published online as supplement of the journal "Biomedical Engineering" by Walter de Gruyter in the regular volume.

Please see further details at: www.bmt2015.de.

■ **Deadline of abstract submission:**^{1,2} **March 13th, 2015**

■ **Abstract notification:** **May 18th, 2015**

1 After the deadline submitted titles and author names cannot be changed.
2 Each author or presenter is allowed to submit up to 2 abstracts/papers.

DGBMT Students Competition

The DGBMT asks students for presenting their results from research projects or diploma theses. The best contributions are awarded certificates and prizes (posters and oral presentations in a separate process).

1. Prize: 1000 EUR, 2. Prize: 600 EUR, 3. Prize: 400 EUR

These submissions are subject to the same peer review process and will undergo an additional evaluation based on quality, degree of innovation and presentation of the scientific-technical work.

Conference venue

University of Lübeck
Gebäude 65, Audimax
Mönkhofweg 245
23562 Lübeck
Germany

Conference office

VDE Conference Service
Stresemannallee 15, 60596 Frankfurt/Main
Germany
Phone +49 (0) 69 6308-477, Fax +49 (0) 69 6308-144
E-mail: vde-conferences@vde.com

ORGANIZERS

German Society for Biomedical Engineering within VDE e.V. (DGBMT)
www.vde.com/dgbmt
Universität zu Lübeck
www.uni-luebeck.de

COMMITTEES

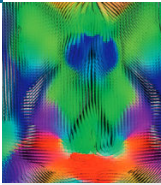
Congress Committee:

Thorsten Buzug, Lübeck (Conference Chair)
Stephan Klein, Lübeck
Hartmut Gehring, Lübeck
Thomas Lenarz, Hannover
Erik Schkommodau, Basel
Cord Schlötelburg, Frankfurt

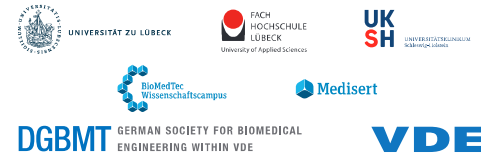
Programm Committee

Jörg Barkhausen, Lübeck
Henrik Bottenweck, Lübeck
Martin Braecklein, München
Hartmut Dickhaus, Heidelberg
Olaf Dössel, Karlsruhe
Hartmut Gehring, Lübeck
Heinz Handels, Lübeck
Jens Hauelsen, Ilmenau
Jörg Hauser, Essen
Klaus-Peter Hoffmann, St. Ingbert
Uvo Hölscher, Münster
Michael Imhoff, Dortmund
Harald Klaus, Berlin
Petra Knaup-Gregori, Heidelberg
Werner Kneist, Mainz
Werner Korb, Leipzig
Marc Kraft, Berlin
Charli Kruse, Lübeck
Wolfgang Lauer, Bonn
Andreas Melzer, Dundee
Jan Modersitzki, Lübeck
Ute Morgenstern, Dresden
Jens Mühlsteff, Eindhoven
Wolfgang Niederlag, Dresden
Heinrich Martin Overhoff, Gelsenkirchen
Thomas Penzel, Berlin
Christina Rode-Schubert, Weidlingen
Steffen Rosahl, Erfurt
Frank Rothe, Berlin
Martin Ryschka, Lübeck
Gregor Schaefer, Gelsenkirchen
Thomas Schanze, Gießen
Thomas Schauer, Berlin
Georg Schmitz, Bochum
Thomas Schmitz-Rode, Aachen
Lothar Schöpe, Dortmund
Achim Schweikard, Lübeck
Olaf Simanski, Wismar
Katrin Sternberg, Rostock
Thomas Stieglitz, Freiburg
Gudrun Stockmanns, Krefeld
Jörg Subke, Gießen
Olaf Such, Best
Gerald Urban, Freiburg
Alfred Vogel, Lübeck
Hans-Jürgen Wildau, Berlin
Thomas Wittenberg, Erlangen
Walter Wrobel, Reutlingen

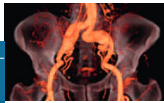
**BMT
2015**
49th DGBMT ANNUAL CONFERENCE
September 16-18, 2015
LÜBECK



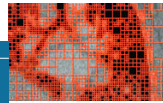
BioMedTec Wissenschaftscampus
Universität zu Lübeck
Fachhochschule Lübeck
www.bmt2015.de



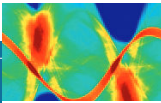
GREETING



TOPICS



EXHIBITION & SPONSORING



The BioMedTec Science Campus Lübeck represents outstanding research on Biomedical Engineering, Biomedicine, and Biotechnology. The triangle of fundamental research at the University of Lübeck (UzL), application oriented research at the University of Applied Science Lübeck (FHL), and clinical research and medical application at the University Medical Center Schleswig-Holstein is complemented by the Fraunhofer Institute of Marine Biotechnology, the Fraunhofer MEVIS Research Group on Image Registration, the Leibniz Research Centre Borstel, and industrial partners at the Technology Centre Lübeck, all located on the BioMedTec Science Campus. This alliance will be the host of the BMT 2015, the 49th annual conference of the German Society for Biomedical Engineering (DGBMT within VDE).

Research and education on medical engineering has been established in Lübeck for decades. The bachelor program on Biomedical Engineering at FHL and the bachelor and master program on Medical Engineering Science at UzL is complemented by a jointly offered international master degree course Biomedical Engineering. Further life-science oriented programs (Medical Computer Sciences, Mathematics in Medicine and Life Sciences, Molecular Life Science, Psychology and Medicine) contribute to the success of the Medical Engineering Science and Biomedical Engineering programs.

Main foci of the conference are imaging technology, image computing, and biophotonics, reflecting the main topics of the Schleswig-Holstein Competence Centre for Technology and Engineering in Medicine (TANDEM).

Physicians, engineers and natural scientists are welcome to conduct an intensive dialogue on the exciting scientific achievements and to discover the best ways for translation from science to practice. Interdisciplinary communication, socializing and brainstorming are long standing traditions of these conferences. As networking event BMT 2015 also offers the opportunity for building a BioMedTec bridge into the Baltic area.

We look forward to seeing you at the BMT 2015 in Lübeck.

Prof. Dr. Thorsten M. Buzug
Director Institute of Medical Engineering, University of Lübeck;
Chair of the BMT 2015

The main topics **imaging technology, image computing and biophotonics** will be represented in sessions on Biophotonics, Cellular-, Tissue-, and Bioengineering, Diagnosis and Therapy Systems, Imaging and Image Computing, Modelling and Simulation, Magnetic Particle Imaging and Therapy.

Papers and posters are requested from all other fields of **Biomedical Engineering** as well, such as:

- **Automation Technology for Medical Applications**
- **Biomaterials and Biocompatibility**
- **Biomechanics and Orthopaedics Technology**
- **Biomedical Micro and Nano Systems**
- **Biophotonics**
- **Biosensors and Bioanalytics**
- **Biosignal Processing**
- **Cellular-, Tissue- and Bioengineering**
- **Clinical and Ambulatory Monitoring**
- **Clinical Engineering and Hospital Technology**
- **Devices and Systems for Surgical Intervention**
- **Diagnosis and Therapy Systems**
- **Health Robotics**
- **Imaging and Image Computing**
- **Intelligent Assistance Systems**
- **Laboratory Diagnostics and POCT**
- **Magnetic Particle Imaging and Therapy**
- **Medical Information Systems and Management**
- **Medical Technology and Society**
- **Modelling and Simulation**
- **Personalized Medical Technology**
- **Prosthetics and Rehabilitation Engineering**
- **Quality Management and Regulatory Affairs**
- **Telemedicine, eHealth, mHealth, Home Care**
- **Training and Further Education for Engineers and Physicians**
- **Usability, Risk Management, and Patient Safety**

Become a partner of the BMT 2015 and present your company or institute at the most important conference in the field of medical engineering in Germany

Exhibition

Present your products, services and research expertise to decision makers at hospitals and from industry at the trade exhibition

Sponsoring

Present yourself as a sponsor of the BMT 2015. We offer different sponsoring options and will be pleased to assist you with your personal conceptual ideas.

Networking

The BMT 2015 comprises several networking parts of the event, including get together, networking and recruiting events.

Recruiting

Take advantage of the opportunity to get in touch with students, graduates and young scientists at recruiting events.

Seminars

Discussion on specific issues can be deepened and presented to the medical community at seminar events.

The conference secretariat will be pleased to deal with your questions and wishes:
VDE Conference Service
Stresemannallee 15
60596 Frankfurt/Main
Germany
Phone +49 (0) 69 6308-144
Fax +49 (0) 69 96315213
E-mail: vde-conferences@vde.com